

DOYLE

American Paintings, Furniture & Decorative Arts

October 3, 2018

ADDENDUM

ADDITIONS

Lot 139A

Hans Schaufelien. THE MERCHANT AND THE ARTIST. Hand-colored woodcut, trimmed to or just within the borderline, framed. Sheet 5 1/5 x 4 inches. Provenance: The Robert Hoe Collection
C Property from a Prominent Connecticut Estate

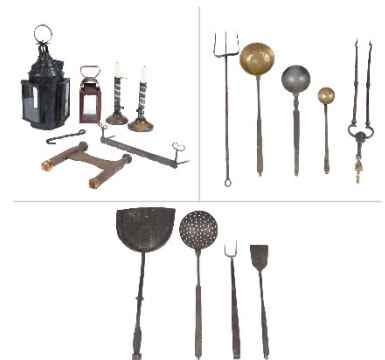
\$200-300



Lot 526A

Group of Iron Kitchen Implements, Lighting, Etc. Including ladles, pair of candlesticks, two lanterns, approximately sixteen items. Length of longest (fork) 31 inches.

\$400-600



DOYLE

Lot 530A

Federal Figured Maple Pipe Box

Circa 1800

With shaped arch, back and front panels and a drawer over a molded base. Height 19 1/4 inches, width 8 1/4 inches, depth 4 3/4 inches.

Provenance: Mr. and Mrs. Jerome Blum, Willow Corners Antiques, Lisbon, CT

\$500-700



CORRECTIONS

- Lot 114 Please note that the correct estimate for this lot is \$10,000 - \$15,000.
- Lot 142 Please note the updated description of this lot is as follows: Pair of Staffordshire Pottery Figures of a Country Boy and Girl.
- Lot 154 Please note the correct description for the fender is: brass and wirework bowed fender.
- Lot 155 Please note the correct height for this lot is approximately 27 inches, not 35 inches as stated in the printed catalogue.
- Lot 166 Please note that one saucer is broken
- Lot 181 Please note that this lot is George III Style not George III as stated in the catalogue
- Lot 189 Please note that this lot is comprised of two Lucerne County examples, one dated 1849, one dated 1850; and one other coverlet.
- Lot 220 Please note that this lot also includes a Set of Three Small Firetools.
- Lot 225 Please note the updated description of this lot is as follows: Shaker Type Slat Back Rush Seat Child's Rocking Armchair; Together with a Slat Back Rush Seat Child's Side Chair.

DOYLE

- Lot 292 Please note that there are three work tables in this lot, the correct description and estimate is:
Federal Mahogany Drop-Leaf Work Table, Circa 1825, with three drawers. Height 28 3/4 inches, width 18 1/2 inches, depth 17 3/4 inches; Together with a Federal Style Mahogany and Maple Work Table. Height 28 inches, width 16 inches, depth 17 inches; And a Federal Mahogany Drop Leaf Two Drawer Work Table. Height 26 1/2 inches, width 18 inches, depth 17 1/4 inches. Estimate \$400-600.
- Lot 346 Please note that the date for this lot has been amended to Early 20th Century not 19th Century as stated in the catalogue
- Lot 422 Please note that this lot is Windsor Style not Windsor, as stated in the catalogue, and the correct estimate is \$300-500
- Lot 430 Please note that this lot includes a pair of brass jamb hooks.
- Lot 483 Please note the updated description of this lot is as follows: this piece is not dated; it is constructed of old and new parts. Please note the revised estimate is \$1,000-\$1,500, not \$5,000-\$7,000 as stated in the printed catalog.
- Lot 501 Please note this figure is on a wood base.
- Lot 547 Please note that this dining table has two leaves.