

DOYLE

20TH CENTURY ABSTRACTION



Wednesday, October 6, 2021

DOYLE.COM

DOYLE

20TH CENTURY ABSTRACTION

AUCTION

Wednesday, October 6, 2021
at 11am Eastern

EXHIBITION

Saturday, October 2, Noon – 5pm
Sunday, October 3, Noon – 5pm
Monday, October 4, Noon – 5pm
And by Appointment at other times

Safety protocols will be in place with limited capacity.
Please maintain social distance during your visit.

LOCATION

Doyle Auctioneers & Appraisers
175 East 87th Street
New York, NY 10128
212-427-2730

This Gallery Guide was created on [Date]
Please see addendum for any changes.

Please check DOYLE.com for our
Terms of Guarantee and Conditions of Sale.



Sale Info



View Lots and Place Bids

Doyle New York

1

Leon Kelly

American, 1901-1982

The Village, 1921

Signed and dated *Leon Kelly 1921* (lr)

Pastel on paper laid to panel

7 x 9 inches (17.7 x 22.8 cm)

Provenance:

Mrs. Stella Voicheck, Philadelphia and New York
Washburn Gallery, New York

Private collection, CT, purchased from the above
in 1988

Thence by descent to the estate

Exhibited:

Leon Kelly, Feb. 4 - 28, 1981, Washburn Gallery,
New York

Cubist Drawings, 1907-1929, Nov. 15 - Jan. 15,
1983, Janie C. Lee Gallery, Houston, cat. illus. p.

54, no. 15

C Estate of a Prominent Connecticut Collector

\$1,500-2,500



2

Hans Hofmann

German/American, 1880-1966

Untitled, circa 1941

Signed *Hans Hoffman* (ll), numbered *4166D/RH-*

161 on the reverse, estate stamped with number

RH-161 on the backing

Watercolor on paper

12 x 9 3/4 inches (30.5 x 24.8 cm)

Provenance:

The estate of the artist

Andre Emmerich Gallery, New York

C

\$7,000-10,000



3

Patrick Heron

British, 1920-1999

Untitled Composition I, 1952

Signed and dated *Patrick Heron 52* (lr)

Gouache on paper

11 x 5 3/4 inches (28 x 14.6 cm)

Provenance:

Redfern Gallery, London

Purchased from the above in 1983 by the current
owner

C

\$6,000-8,000



4

Lyonel Feininger

German/American, 1871-1956

Ghosties, 1955

Signed and dated *Feininger 55* (ll)

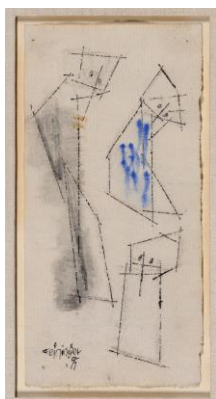
Ink and watercolor on paper

6 1/4 x 3 inches (15.8 x 7.6 cm)

Achim Moeller, Managing Principal of The Lyonel
Feininger Project LLC, New York - Berlin has
confirmed the authenticity of this work, which is
registered under no. 1712-08-16-21.

C

\$7,000-10,000



5

Dorothy Dehner

American, 1901-1994

Totem-Caged, 1955

Signed and dated *Dehner 55*

Bronze on wood base

Height with base 13 1/4 inches (33.6 cm)

C Estate of a Prominent Connecticut Collector

\$4,000-6,000



6

Donald Judd

American, 1928-1994

Untitled, 1955

Signed *JUDD* on the stretcher; dated and

inscribed *J5 55* on the reverse

Oil on canvas

20 x 26 1/8 inches (50.8 x 66.3 cm)

Provenance:

The artist

Gift of the artist to Mrs. Alice Payne Kjellgren,

circa 1955

Thence by descent to the estate

C

\$200,000-400,000



7

Barbara Hepworth (1903-1975)

MYCENAE

Color lithograph, 1958, on wove paper, aside

from the numbered edition of 30, printed at
Curwen Studio, published by Curwen Prints Ltd.,
with good margins, framed.

Image 16 1/4 x 11 1/8 inches; 413 x 283 mm.

Sheet 20 1/8 x 15 inches; 511 x 381 mm.

C

\$1,000-1,500



8

Michael Goldberg

American, 1924-2007

Abstraction, 1959

Signed *Goldberg* (lr)

Oil, chalk and paper collage on paper

12 3/8 x 16 inches (31.4 x 40.6 cm)

Provenance:

Martha Jackson Gallery, New York

Anderson Gallery, Buffalo

Manny Silverman Gallery, Los Angeles

Private collection, CT

Sale: Shannon's, Milford, CT, *American &*

European Fine Art Sale, Apr. 26, 2012, lot 79

Purchased from the above by the present owner

C

\$12,000-18,000



Sale Date - 10/06/2021

Doyle New York

9

Michael Goldberg

American, 1924-2007

Blue, Green and Red, 1949

Signed and dated *Goldberg '49* (lr)

Watercolor on paper

Sheet size 11 3/4 x 8 5/8 inches (29.8 x 21.9 cm)

Provenance:

Martha Jackson Gallery, New York

David Anderson Gallery, New York/Buffalo

The Estate of Dr. Eugene Gaier, Buffalo

Sale, Cottone Auctions, Rochester, Mar. 27, 2001, lot 70

Purchased from the above by the current owner

C

\$2,000-4,000



10

Karel Appel

Dutch, 1921-2006

Untitled, 1959

Signed and dated *Appel '59* (ll)

Gouache and pastel on paper

22 1/4 x 30 3/8 inches (56.5 x 77.1 cm)

Provenance:

Martha Jackson Gallery, New York

C

\$20,000-30,000



11

Karel Appel

Dutch, 1921-2006

Untitled, 1960

Signed and dated *Appel '60* (lr)

Oil, gouache and crayon on paper

22 x 30 inches (55.9 x 76.2 cm)

C

\$20,000-30,000



12

Alan Reynolds

British, 1926-2014

Structure - Red, Green and Yellow, 1960

Signed *Reynolds* (lr), signed, dated and inscribed for *Jeff with love/Alan and Vona 25/12/60* and as titled on two labels affixed to the reverse

Watercolor on paper

12 1/8 x 10 1/4 inches (30.8 x 26 cm)

Provenance:

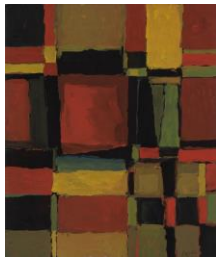
Gift of the artist to Earl Jeffrey John Archer

Amherst, 5th Earl Amherst

Gift of the above to the present owner

C

\$3,000-4,000



13

Salvatore Romano

American, 1925-2015

Painting #III, 1959-60

Signed and dated *S.M. Romano 59-60* and inscribed as titled on the reverse

Acrylic and plaster on canvas

80 1/4 x 61 1/2 inches (203.8 x 156.2 cm)

C

\$1,500-2,500



14

Mark Tobey

American, 1890-1976

Fete Estevale, 1960

Signed *Tobey* (lr)

Tempera on paper

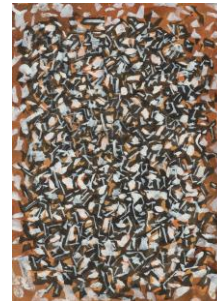
6 3/4 x 4 7/8 inches (17.1 x 12.4 cm)

Provenance:

Willard Gallery, New York

C

\$7,000-10,000



15

Karl Schrag

American, 1912-1995

Untitled, 1960

Signed *Karl Schrag* (ll), dated 1960 on the overlap

Oil on canvas

30 x 36 inches (76.2 x 91.4 cm)

C Estate of a Prominent Connecticut Collector

\$3,000-5,000



16

William T. Wiley

American, 1937-2021

Untitled, 1962

Signed and dated *Wm. T. Wiley 1962* (lr)

Oil and ink on paper stretched to two wood panels

13 5/8 x 10 7/8 inches (34.6 x 27.6 cm)

Provenance:

Private collection, New York

C

\$4,000-6,000



17

William T. Wiley

American, 1937-2021

Sapo, 1962

Signed and dated *Wiley 63* on the reverse

Oil on paperboard in two sheets, laid to Masonite

12 x 20 inches (30.5 x 50.1 cm)

Unframed

Provenance:

Private collection, New York

C

\$4,000-6,000



18

William T. Wiley

American, 1937-2021

Untitled, 1963

Signed and dated *Wm. T. Wiley 1963* on the reverse

Oil and ink on paper stretched to wood

11 3/8 x 10 inches (28.9 x 25.4 cm)

Provenance:

Private collection, New York

C

\$3,000-5,000



Doyle New York

19

James Suzuki

Japanese/American, b. 1933
Resistance, 1962
Signed and dated *Suzuki 62* (lr); signed, dated and titled on the reverse
Oil on canvas
33 x 31 inches (83.8 x 78.7 cm)

Provenance:

Private collection, Sarasota, FL
Private collection, Las Vegas, NV
C
\$4,000-6,000



20

Keith Vaughan

British, 1912-1977
Heath 1, 1963
Signed *Vaughan* (lr), dated *Sept. 9/63* on the reverse
Oil on paperboard
17 x 15 3/4 inches (43.2 x 40 cm)

Provenance:

Marlborough Fine Art Ltd., London
Redfern Gallery, London
Purchased from the above by the current owner, 1983
C
\$7,000-9,000



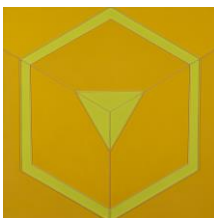
21

Peter Stroud

British, 1921-2012
Yellow Circumvent with White Ochre, 1964
Signed and dated *Peter Stroud 1964* and inscribed as titled on the reverse
Compound emulsion on plywood
60 x 60 inches (152.4 x 152.4 cm)

Provenance:

The artist
Purchased directly from the artist in 1966, private collection, Bloomfield Hills, MI
C
\$5,000-7,000



22

Adolph Gottlieb

American, 1903-1974
A Heavy Matter, 1965
Signed and dated *Adolph Gottlieb/1965*, inscribed *6519* and as titled on the reverse
Oil on canvas
30 x 24 1/8 inches (76.2 x 61.3 cm)

Provenance:

The artist
Purchased directly from the artist by Dr. James Pool
Thence by descent to the estate
C Property from the Estate of Dr. James Lawrence Pool
\$300,000-500,000



23

Ida Rittenberg Kohlmeier

American, 1912-1997
Transcurrent II, circa 1961
Signed *Kohlmeier* (lr)
Oil on Masonite
48 x 60 inches (122 x 152.4 cm)
C
\$20,000-30,000



24

Paul Jenkins

American, 1923-2012
Phenomena Emblem Gold, 1968
Signed *Paul Jenkins* (ll), signed and dated *Paul Jenkins/1968* and inscribed as titled on the overlap
Acrylic on canvas
40 x 26 inches (101.6 x 66 cm)

Provenance:

Purchased directly from the artist
Thence by descent to the estate
C Estate of a Prominent Connecticut Collector
\$12,000-18,000



25

Paul Jenkins (1923-2012)

PHENOMENA: FRANKLIN'S KITE
Color lithograph, 1973, on wove paper, signed, dated and numbered *129/175* in pencil, the full sheet, framed.
Sheet 26 1/4 x 19 1/4 inches; 667 x 489 mm.
•
\$800-1,200



26

Hsiao Chin

Taiwanese, b. 1935
Untitled
Artist's stamp on the reverse
Acrylic on canvas stretched over panel, from a series of original multiple paintings
13 7/8 x 25 5/8 inches (35.2 x 65.1 cm)
Unframed
C
\$3,000-5,000



27

Hsiao Chin

Taiwanese, b. 1935
Untitled, 1968
Artist's stamp on the reverse
Acrylic on canvas stretched over panel, from a series of original multiple paintings
23 3/8 x 23 3/8 inches (59.3 x 59.3 cm)
Unframed
C
\$3,000-5,000



Doyle New York

28

Elaine de Kooning

American, 1918-1989

Toro I

Signed *E. de K. (lr)*

Watercolor on paper

14 x 16 7/8 inches (35.5 x 42.8 cm)

Provenance:

Graham Gallery, New York

C

\$2,500-4,500



29

Kenneth Noland

American, 1924-2010

Untitled, 1969

Signed and dated *K. Noland 1969* on the reverse

Acrylic on canvas

17 1/4 x 90 1/2 inches (43.8 x 229.8 cm)

Provenance:

Acquired directly from the artist in 1982 by Jaime

Andrade

Private collection, New York, acquired in 2017

C

\$100,000-150,000



30

Julian Stanczak

American/Polish, 1928-2007

Rows, 1970

Signed *J. Stanczak* on the reverse, dated 1970

and inscribed as titled on the stretcher

Acrylic on canvas

27 3/4 x 27 3/4 inches (70.4 x 70.4 cm)

Provenance:

Martha Jackson Gallery, New York

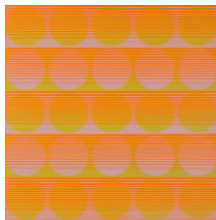
Private collection, CT, purchased from the above

in 1971

Thence by descent to the estate

C Estate of a Prominent Connecticut Collector

\$20,000-30,000



31

Pat Lipsky

American, b. 1941

The First Snow, 1970

Acrylic on canvas

59 x 74 3/4 inches (149.9 x 189.8 cm)

Provenance:

André Emmerich Gallery, New York

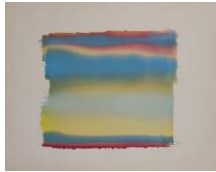
Private collection, CT, purchased from the above

in 1971

Thence by descent to the estate

C Estate of a Prominent Connecticut Collector

\$3,000-5,000



32

John Seery

American, b. 1941

Mark's Turn, 1970

Signed and dated *John Seery 1970* and

inscribed as titled on the reverse

Acrylic on canvas

54 5/8 x 42 inches (138.7 x 106.7 cm)

Provenance:

André Emmerich Gallery, New York

Private collection, CT, purchased from the above

in 1971

Thence by descent to the estate

C Estate of a Prominent Connecticut Collector

\$3,000-5,000



33

Albert Alcalay

American, 1917-2008

Between Two Lakes, 1972

Signed and dated *Alcalay '72 (lr)*, signed and

dated *Albert Alcalay 1972* and inscribed as titled

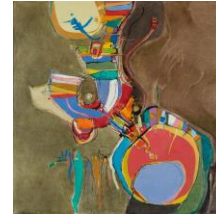
on the reverse

Acrylic on canvas

40 x 40 inches (101.6 x 101.6 cm)

C

\$2,500-4,500



34

Ernest Tino Trova

American, 1927-2009

Study/FM Figure with Shadow, 1972

Acrylic and graphite on canvas

59 3/4 x 50 inches (151.7 x 127 cm)

Provenance:

Hokin Gallery, Inc., Palm Beach, FL

Sale, Christie's East, New York, *Contemporary*

Paintings, Drawings and Sculpture, May 7, 1990,

lot 115

C Property of a Prominent Private Collector

\$4,000-6,000



35

John Little

American, 1907-1984

Monoblue, 1973

Signed and dated *John Little 1973 (lc)*, signed

and dated *John Little 1973* on the reverse,

inscribed as titled on the overlap

Oil and paper collage on linen

72 x 62 1/4 inches (182.9 x 158.1 cm)

C

\$12,000-18,000



36

Edward Clark

American, 1926-2019

Untitled, 1973

Signed and dated *Clark 1973 (lr)*, dated and

inscribed *IFE/AUG 20 -/LAST WORK/1973/EC33*

on the reverse

Pastel, pigment and graphite on paper

29 5/8 x 41 1/2 inches (75.2 x 105.4 cm)

C

\$20,000-40,000



Doyle New York

37

Niki de Saint Phalle

French, 1930-2002

La baigneuse ou Nana de Berlin, circa 1973

Incised with artist's signature and numbered 475

Painted polyester, from an edition of 500

10 1/2 x 11 3/4 x 13 1/4 inches (26.6 x 28.8 x 33.6 cm)

C

\$8,000-12,000



38

Paul Kelpo

American, 1902-1985

Untitled, 1974

Signed and dated *Kelpo '74 (II)*

Watercolor on paper

Sheet 18 5/8 x 14 inches (47.3 x 35.5 cm)

Provenance:

Acquired directly from the artist

Thence by descent to the current owner

C

\$2,000-4,000



39

Friedel Dzubas

German/American, 1915-1994

Gap, 1974

Signed and dated *Dzubas 74* and inscribed as titled on the reverse

Magna on canvas

40 x 40 inches (101.6 x 101.6 cm)

Provenance:

Knoedler Contemporary Art, New York

C Estate of a Prominent Connecticut Collector

\$30,000-50,000



40

Robert Goodnough

American, 1917-2010

Movement Upward, 1985

Signed *Goodnough (lr)*, signed and dated *Goodnough '85* and inscribed as titled on the reverse

Acrylic and oil on canvas

48 1/4 x 63 3/4 inches (122.5 x 161.9 cm)

C

\$4,000-6,000



41

Robert Goodnough

American, 1917-2010

Light Development, 1971

Signed and dated *Goodnough/1971* and inscribed as titled on the reverse, signed and dated *Goodnough/1971* and inscribed as titled on the overlap

Oil and acrylic on canvas

24 x 24 inches (61 x 61 cm)

Provenance:

Andre Emmerich Gallery, New York

Private collection, CT, purchased from the above

Thence by descent to the estate

C Estate of a Prominent Connecticut Collector

\$1,000-1,500



42

Harry Nadler

American, 1930-1990

Chama, circa 1974

Signed *Harry Nadler* and inscribed as titled on the stretcher

Oil on canvas

48 1/4 x 48 inches (122.55 x 121.9 cm)

Unframed

Provenance:

Sale, Sotheby Parke-Bernet, New York, *Artists of the Hamptons Benefit*, Sep. 18, 1975, lot 56 (in conjunction with Guild Hall, East Hampton)

Private collection, CT, purchased from the above

Thence by descent to the estate

C Estate of a Prominent Connecticut Collector

\$2,500-3,500



43

Theodoros Stamos

Greek/American, 1922-1997

Infinity Field, Lefkada Series, 1976

Signed and dated *Stamos 1976* and inscribed as titled on the stretcher

Acrylic on canvas

72 x 49 3/4 inches (182.8 x 126.3 cm)

Unframed

Provenance:

Marlborough Galleries, New York

Purchased from the above by the current owner

C

\$70,000-90,000



44

Theodoros Stamos

Greek/American, 1922-1997

Infinity Field, Lefkada Series G, 1973

Gouache on paper

22 1/4 x 40 1/4 inches (56.5 x 102.2 cm)

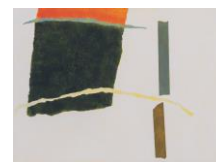
Provenance:

Marlborough Galleries, New York

Purchased from the above by the current owner

C

\$4,000-6,000



45

Robert Courtright

American, 1926-2011

Untitled (Grey), 1976

Signed and dated *Courtright '76 (lr)*

Pigment on paper collage laid to panel

23 1/2 x 23 1/2 inches (59.7 x 59.7 cm)

Provenance:

Andrew Crispo Gallery, Inc., New York

C Estate of a Prominent Connecticut Collector

\$2,000-4,000



Doyle New York

46

William Perehudoff

Canadian, 1918-2013

Andante 76-29, 1976

Signed and dated *W. Perehudoff 1976* and inscribed as titled on the reverse

Acrylic on canvas

42 1/2 x 43 3/8 inches (107.9 x 110.1 cm)

Provenance:

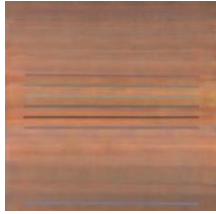
Meredith Long Contemporary, New York

Private collection, CT, purchased from the above in 1979

Thence by descent to the estate

C Estate of a Prominent Connecticut Collector

\$12,000-18,000



47

Cleve Gray

American, 1918-2004

Reach, 1976

Signed and dated *Gray '76* and inscribed as titled on the reverse

Acrylic on canvas

70 x 72 inches (177.8 x 182.8 cm)

Provenance:

Irving Galleries, Palm Beach

C

\$5,000-8,000



48

Sister Mary Corita Kent (1918-1986)

RED MOON

Color screenprint on canvas, 1976, signed in white crayon, commissioned by the Digital Equipment Corporation, Maynard, Massachusetts, unframed.

Image 40 x 31 1/8 inches; 1016 x 791 mm.

Canvas 44 3/4 x 33 1/2 inches; 1137 x 851 mm.

C

\$2,000-3,000



49

Herbert Ferber

American, 1906-1991

Williams IV, 1976

Signed and dated *Ferber 76* on the reverse

Brass

13 5/8 x 18 1/4 x 11 3/4 inches (34.6 x 46.3 x 29.8 cm)



Provenance:

Andre Emmerich Gallery, New York

Private collection, CT, purchased from the above in 1977

Thence by descent to the estate

C Estate of a Prominent Connecticut Collector

\$4,000-6,000

50

Manuel Neri

American, b. 1930

Untitled Standing Figure No. 3, 1976-81

Plaster with steel armature

Height 66 inches (167.6 cm)

Provenance:

Diane Brown Gallery, Washington, D.C.

Private collection, acquired from the above, Dec. 16, 1992

Thence by descent in the family

C

\$25,000-45,000



51

Alexander Liberman

Russian/American, 1912-1999

Untitled VI, 1977

Signed and dated *Alexander Liberman 77 (lr)*

Acrylic and charcoal on paper

39 3/4 x 25 1/4 inches

Provenance:

Andre Emmerich Gallery, New York

C Estate of Herbert Kasper

\$2,000-4,000



52

Richard Nonas (1936-2021)

UNTITLED

Lithograph, 1976, printed on two sheets of wove paper, signed, dated, numbered 18/18 and dedicated for *Bob Blumberg* in pencil, the full sheets, framed.

25 5/8 x 68 1/2 inches; 651 x 1740 mm.

Each sheet 25 5/8 x 34 1/8 inches; 651 x 867 mm.

Provenance:

Gift of the artist to the current owner

C

\$600-800



53

Billy Al Bengston

American, b. 1934

Castor Draculas, 1977

Acrylic on canvas

68 x 76 inches (172.7 x 193 cm)

Provenance:

The artist

John Berggruen Gallery, San Francisco

C

\$20,000-30,000



Doyle New York

54

Nancy Graves

American, 1939-1995

Hekt, 1978

Signed and dated *N.S. Graves '78* and inscribed as titled on the reverse

Oil on canvas

73 x 53 inches (185.4 x 134.6 cm)

Provenance:

Sale, Christies, New York, *Contemporary Art*,

Nov. 13, 1998, lot 232

Janie C. Lee Gallery, Houston

C

\$12,000-18,000



55

Dan Christensen

American, 1942-2007

Black Skimmer, 1979

Signed and dated *Dan Christensen 1979* and inscribed as titled on the overlap

Acrylic on canvas

70 x 55 inches (177.8 x 139.7 cm)

Provenance:

Meredith Long & Co., Houston

C

\$6,000-9,000



56

David Reed

American, b. 1946

Study 12, 1979

Signed and dated *David Reed 1979* and inscribed as titled on the reverse

Acrylic on two joined panels

9 x 18 inches (22.8 x 45.7 cm)

Unframed

This work includes the artist's cardboard protective box, which is signed and inscribed as titled.

C

\$4,000-6,000



57

Nabil Nahas

Lebanese, b. 1949

Untitled #2, 1979

Signed and dated *Nabil Nahas 79 (lr)*

Graphite and gouache on paper

22 x 22 inches (55.9 x 55.9 cm)

Provenance:

Robert Miller Gallery, New York

Private collection, CT

Thence by descent to the estate

C Estate of a Prominent Connecticut Collector

\$5,000-7,000



58

Ray Parker

American, 1922-1990

Untitled, 1979

Initialed and dated *RP 79 (lr)*, initialed and dated *RP 79* on the overlap

Oil on paper laid to canvas

20 3/4 x 15 inches (52.7 x 38.1 cm)

Provenance:

Betty Cuninghame Gallery, New York

C Estate of a Prominent Connecticut Collector

\$1,000-1,500



59

Bruno Romeda

Italian, 1933-2017

Square, 1980

Signed and dated *Romeda 80*

Bronze with green patina

10 5/8 x 8 3/4 x 2 1/8 inches (27 x 22.2 x 5.4 cm)

Provenance:

Camillos Kouros Gallery, New York

Private collection, CT, purchased from the above in 1987

Thence by descent to the estate

C Estate of a Prominent Connecticut Collector

\$2,000-4,000



60

Norman Bluhm

American, 1921-1999

Untitled, 1982

Signed and dated *bluhm 82 (lc)*, signed and dated *bluhm 82* on the reverse

Ink and watercolor on paper

22 1/2 x 30 inches (57.1 x 76.2 cm)

Provenance:

Sale, Barridoff Galleries, Portland, ME,

International Fine Art Auction, Oct. 16, 2015, lot 171

C

\$4,000-6,000



61

Larry Zox

American, 1936-2006

Untitled, 1981

Signed and numbered *Zox 81-055* on the reverse, artist's stamp, signed, dated and numbered *L. Zox/1981/81-055* on label affixed to the stretcher

Acrylic on canvas

50 3/4 x 88 3/4 inches (128.9 x 225.4 cm)

C

\$8,000-12,000



62

Larry Zox

American, 1936-2006

Untitled, 1992

Signed *Zox (lr)*

Acrylic and watercolor on Arches paper

29 1/2 x 41 1/2 inches (74.9 x 105.4 cm)

Unframed

Provenance:

Private collection, New York

C

\$1,000-2,000



Doyle New York

63

Art & Language

British, b. 1968

Study for Impressionism Returning Sometime in the Future III, 1984

Signed and dated *Michael Baldwin...* (second signature indistinct) 1983 (lr)

Acrylic and graphite on paper
39 x 54 1/2 inches (100 x 140 cm)

Provenance:

Lisson Gallery, London

Private collection, San Antonio

Sale, Heritage Auctions, Dallas, *Modern & Contemporary Art #8019*, Nov. 19, 2020, lot 77112

C

\$8,000-12,000



64

Bram Bogart

American, 1921-2012

De Blokken, 1984

Signed and dated *Bram Bogart/mei 1984* and inscribed as titled on the reverse

Mixed media on wood
40 x 44 1/4 inches (101.6 x 112.4 cm)

Provenance:

Sale, Christie's, Amsterdam, *Twentieth Century Art*, sale 2745, Jun. 5, 2007, lot 271

Exhibited:

Stichting Veranneman, Kruishoutem, no. D. 1034

C

\$20,000-30,000



65

Kikuo Saito

Japanese, 1939-2016

Glass Tent, 1992

Signed and dated *Kikuo Saito 1992* and inscribed as titled on the reverse

Oil on canvas

67 x 59 3/4 inches (170.2 x 151.7 cm)

C Property from the Hallenbeck Family Collection

\$5,000-7,000



66

Kikuo Saito

Japanese, 1939-2016

Spanish Ghost, 1987

Signed and dated *Kikuo Saito 1987* and inscribed as titled on the reverse

Acrylic on canvas

52 x 52 1/2 inches (132 x 133.3 cm)

Provenance:

Salander O'Reilly Galleries, Inc., New York

Private collection, CT, purchased from the above in 1988

Thence by descent to the estate

C Estate of a Prominent Connecticut Collector

\$3,000-5,000



67

Al Taylor

American, 1948-1999

Bar Codes, 1993

Graphite, gouache, ink, ballpoint pen, paper collage and correction fluid on paper
14 x 10 inches (35.5 x 25.4 cm)

Provenance:

David Zwirner, New York

The Al Taylor Estate has given this work the estate number No. AT (D-93.341)

C Estate of Herbert Kasper

\$2,000-4,000



68

Sol LeWitt

American, b. 1942

Wavy Brushstrokes, Diptych, 1995

Signed and dated *S. LeWitt/95* (lr)

Gouache on two sheets of paper

Overall 29 3/4 x 44 inches (75.5 x 111.7 cm), each sheet 29 3/4 x 22 inches (75.5 x 55.9 cm)

Provenance:

Pace Wildenstein Gallery, New York

Private collection, CT, purchased from the above in 1996

Thence by descent to the estate

C Estate of a Prominent Connecticut Collector

\$80,000-120,000



69

Sol LeWitt

American, 1928-2007

Untitled, 1993

Signed and dated *LeWitt 93* (lr)

Gouache on mat board

11 1/4 x 7 3/4 inches (28.5 x 19.7 cm)

Provenance:

Annina Nosei Gallery, New York

C

\$7,000-9,000



70

Dale Chihuly

American, b. 1941

Ikebana Drawing Diptych, 1998

Signed *Chihuly* (lr)

Acrylic on paper, in two parts

82 x 29 1/2 inches overall (208.2 x 74.9 cm)

Provenance:

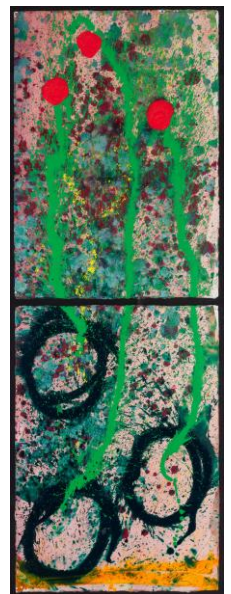
The artist

Sale, *15th Annual Tribute to the Arts Gala Charity Auction Honoring Dale Chihuly*, The Friends of Bezalel, Israel's National Academy of Arts and Design, Pierre Hotel, New York, Nov. 5, 1998

Purchased from the above by the current owner

C

\$6,000-9,000



71

Melvin Edwards

American, b. 1937

Nyam, 2006

Signed and dated *MEwards/2006* and inscribed
as titled on the reverse

Welded steel and found objects

9 x 7 x 4 1/2 inches (22.8 x 17.8 x 11.4 cm)

C

\$15,000-25,000

