

# DOYLE

## English & Continental Furniture & Decorative Arts

October 13, 2021

### ADDENDUM

---

#### ADDITIONS

##### Lot 261A

Worcester (Dr. Wall) Porcelain Cobalt-Blue Ground  
Saucer Dish

Circa 1765-70, incised sB to underside

Finely painted in colors with a central moth, surrounded by three gilt rocaille cartouches enclosing 'fancy' birds in landscapes, alternating with smaller cartouches enclosing a range of insects, reserve on a mottled blue ground, within a gilt line rim. Diameter 6 inches.

C

\$300-500



##### Lot 268A

English Porcelain Botanical Gilt White Partial Dessert  
Service

Circa 1830-50, iron-red pattern no. 69

Each center finely painted with a specimen flower, including convolvulus, tulips, peony, ranunculus and other flowers within gilt scroll and scalloped rims, comprising a footed compote, two shell-shaped dishes, two shaped square dishes, four two-handled oval dishes, fifteen dessert plates. Diameter 8 3/8 inches.



Provenance:

D.M. & P. Manheim (foil labels to some).

For similar specimen services, also identified as pattern no. 691, see North East Auctions, NH, 26 October 2008, lot 981 and Christie's, London, 6 February 1997, lot 162.

C

\$1,500-2,500

Lot 274A

Continental Porcelain Large Mug

19th Century, pseudo alchemical tin mark, attributed to Samson

In the Plymouth style, of pear-shape with reeded loop handle and splayed foot, enameled with a displaying bird and another in flight bird in a rocky landscape flanked by trees, beneath a gilt latticework rim. Height 6 3/4 inches.



Provenance:

Dr. William P. Harbeson Collection (no. E.P. 2, paper label).

Sotheby's Parke-Bernet, 4 April 1972, part lot 95.

For a nearly identical example, see Woolley & Wallace, Salisbury, U.K., 29 November 2006, lot 662..

C

\$50-150

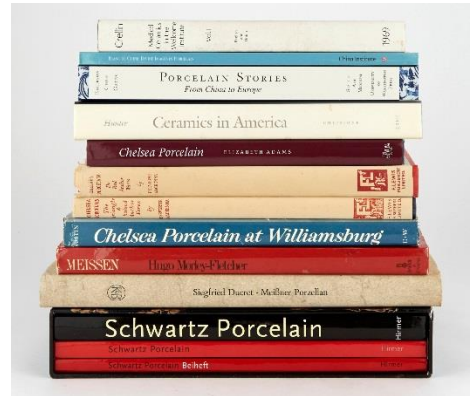
Lot 283A

Group of Porcelain and Pottery Reference Books

Including John Ayers. *Blanc de Chine: Divine Images in Porcelain*; Siegfried Ducret. *Meissner Porzellan Bemalt in Augsburg, 1718 Bis Um 1750*, 2 volumes; Monika Kopplin. *Schwartz Porcelain. Die Leidenschaft für Lack und ihre Wirkung auf das Europäische Porzellan*, 2 volumes + 1 volume; F. Severne MacKenna. *Chelsea Porcelain: The Triangle & Raised Anchor Wares*; F. Severne MacKenna. *Chelsea Porcelain: The Red Anchor Wares*; J.K. Crellin. *Medical Ceramics in the Wellcome Institute*. Etc. Approximately forty volumes.

C

\$250-350



Lot 371A

Set of Four Continental Neoclassical Style Gilt-Bronze and Glass Two-Light Sconces

Of recent manufacturer, made to match the preceding lot. Height 29 1/2 inches (74.9 cm), width 17 inches (43.1 cm)

C

\$1,200-1,800



## **CORRECTIONS**

- Lot 87      Please note that the correct measurement is diameter 6 inches and not width 16 inches as of 10/13/21.
- Lot 173      Please note that this is an **assembled** Worcester (Flight, Barr & Barr) Porcelain Apple-Green Ground Crested Table Service
- Lot 249      Please note the date has been removed from this lot as of 10/8/21 at 5PM.
- Lot 285      Please note the description and condition report have been updated on this lot:  
**Close** Pair of Chinese Gilt-Decorated Famille Noire Porcelain Vases.
- Condition report: Good overall condition, with some scratches to gilt decoration. Please note that the gilt decoration, while quite close, does vary between the two lamps. The most difference is in the lower bands of ornament near the base. Most people would not notice unless it was pointed out.
- Lot 289      Please note the correct estimate for the vitrine is \$1,500-2,500.
- Lot 316      Please note that the correct description for this lot is:  
Set of Eight Classical Mahogany Dining Chairs, circa 1815, Baltimore, possibly made by William Camp.
- .

## **RESCHEDULED**

128, 398, 399

## **WITHDRAWALS**